



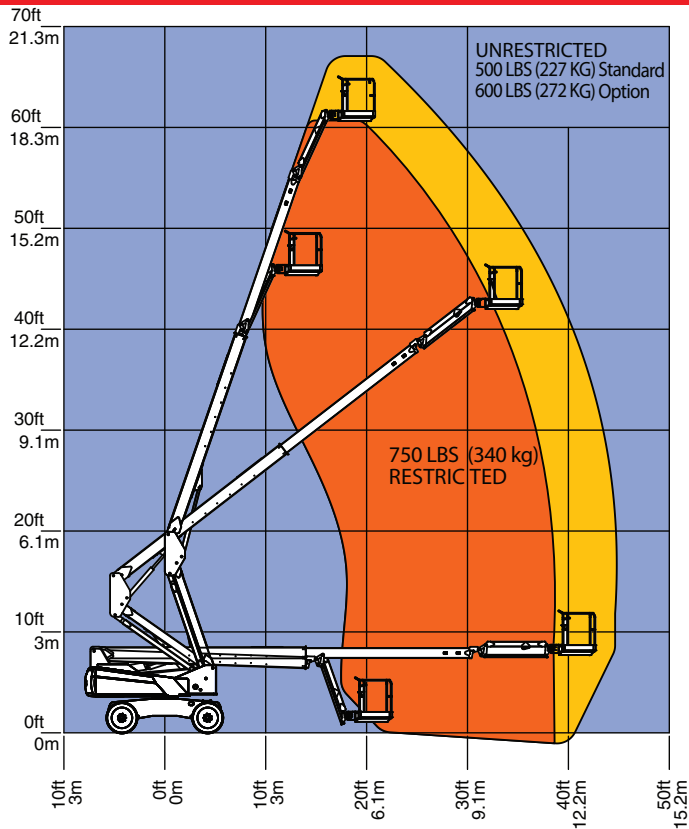
60-J

DIESEL BOOM

**Full-Featured, Rugged
Simple, Reliable**

- 66-Ft (20 m) Working Height with Standard 6-Ft (1.8 m) Jib for 135° Jib Range of Motion
- Full Time Hydrostatic 4WD with Oscillating Axle and 45% Gradeability
- Standard 8-Ft (2.4 m) Platform Includes 3-Sided Entry with Swing Gate
- Continuous 360° Turntable Rotation
- Only 17,900 lbs (8,119 kg) -- Transport 2 per Truck!





MEC Aerial Work Platforms

1401 S. Madera Avenue | Kerman, CA 93630 | USA
 Toll free: 1.877.MEC LIFT | 1.877.632.5438
 Tel: 559.842.1500 | Fax: 559.842.1520
 Email: info@MECawp.com
 www.MECawp.com

97009
 4/15

60-J Diesel

Heights	
Working Height*	66 ft* (20.1 m)
Maximum Platform Height	60 ft (18.3 m)
Maximum Drive Height	60 ft (18.3 m)
Maximum Outreach	42 ft 8 in (13.0 m)
Turntable Swing	Continuous
Jib Range Of Motion	135°
Platform Rotation	180° (90° each side)
Platform Size & Capacity	
Platform Capacity	500 lb (227 kg) standard; 600 lb (272 kg) option 750 lb (340 kg) w/ restricted range option
Personnel Capacity	2 Persons
Platform Width	96 in (2.4 m)
Platform Depth	40 in (1.0 m)
Platform Entry	1 End Swing Gate, 2 Slide Bars
Machine Dimensions	
Length - Stowed (Overall)	30 ft 6 in (9.3 m)
Width	96 in (2.4 m)
Overall Height	100 in (2.5 m)
Tailswing	47 in (1.2 m)
Weight	17,900 lbs (8,119 kg)
Working Conditions	
Drive	4 Wheel Drive
Gradability	45% (24°)
Ground Clearance	12.0 in (.3 m)
Breakover Angle	22°
Axle Oscillation	20° (10° each direction)
Tires	Standard Air-Filled; Foam-Filled, Non-Marking optional
Power	
Power Source	44 HP Kubota Turbo Diesel
Fuel Capacity	32 gal (121 L)
Hydraulic Oil Capacity	40 gal (151 L)
Movement	
Inside Turning Radius	6 ft 6 in (2.0 m)
Drive Speed	4.0 mph (6.4 km/h)
Boom Lift Speed	55 sec
Boom Extend Speed	25 sec
Jib Lift Speed	20 sec

*Metric equivalent of working height adds 2m to platform height. U.S. adds 6 ft. to platform height.

IMPORTANT -- MEC lifts must be on a firm level surface while elevated.

Warranty - MEC Aerial Work Platforms carry a one (1) year warranty on defective component parts and a five (5) year warranty on defective structural components. This warranty applies to the original owner only. Consult your MEC dealer for warranty details.

Meets or exceeds the requirements of ANSI A92.5-2006, CSA B354.4-2002, and EN280:2013 as applicable. Specifications subject to change without notice. Photos and diagrams in this brochure are for illustrative purposes only. Contact your MEC distributor for detailed instructions on the proper use and maintenance of this equipment.

Manufacturer reserves the right to make changes to specifications in pursuit of continuous improvement.

Distributed by: